

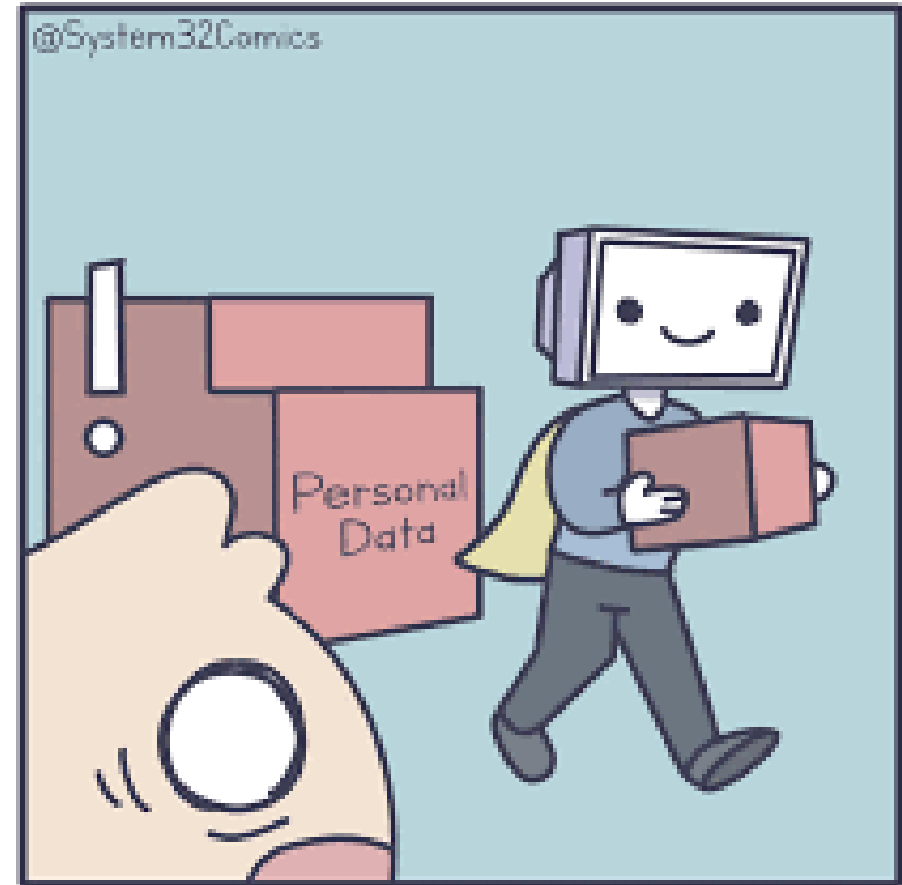


# Evaluation of the SwedeAmp Database: Focus on Coverage and Amputation Levels

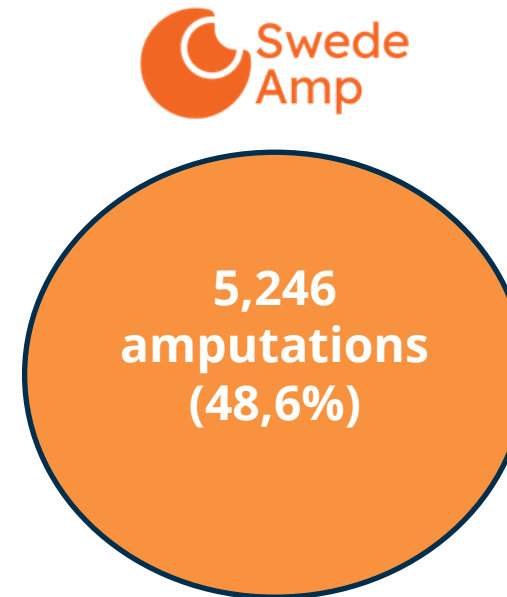
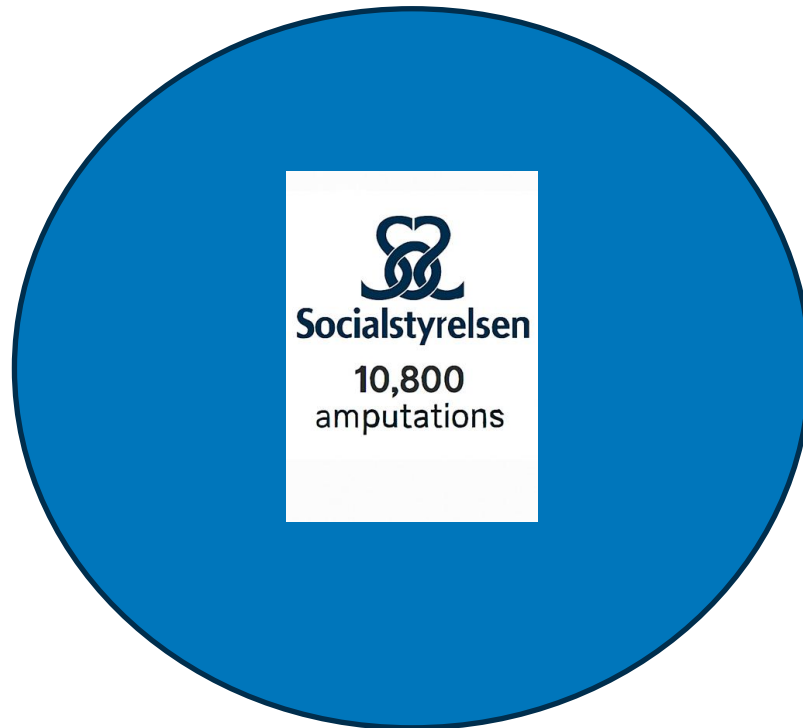
Anton G. Johannesson, CPO

## Background

- The main reason for this project was to analyse the scientific value of the data collected within SwedeAmp
- We apply for data from SwedeAmp for the period 2018 – 2023 after 6 months we could access the data.



## Lower limb amputation in Sweden 2018-2023



## Coverage rate (missing data)



5,246  
amputations  
(48,6%)

**Table 1:** A systematic overview of the registered material.

Amputation Level	IPR		SwedeAmp*		Missing Data	
	n	%	n	%	n	%
TF	4,534	42.1	1,828	34.9	2,706	59.7
KD	800	7.5	438	8.3	362	45.3
TT	5,454	50.4	2,980	56.8	2,474	45.4
Sum *	10,788	100	5,246	100	5,542	**51.4

\* 12 cases excluded due to missing information.

\*\* Corresponding to the total % of missing data, not the sum of the column.

### ***IPR Database Data:***

- Östergötlands region: AK/BK ratio of 1.72/1 (63.3% above-knee vs. 36.7% below-knee).
- Hallands region: AK/BK ratio of 0.69/1 (40.9% above-knee vs. 59.1% below-knee).

### ***SwedeAmp Register Data:***

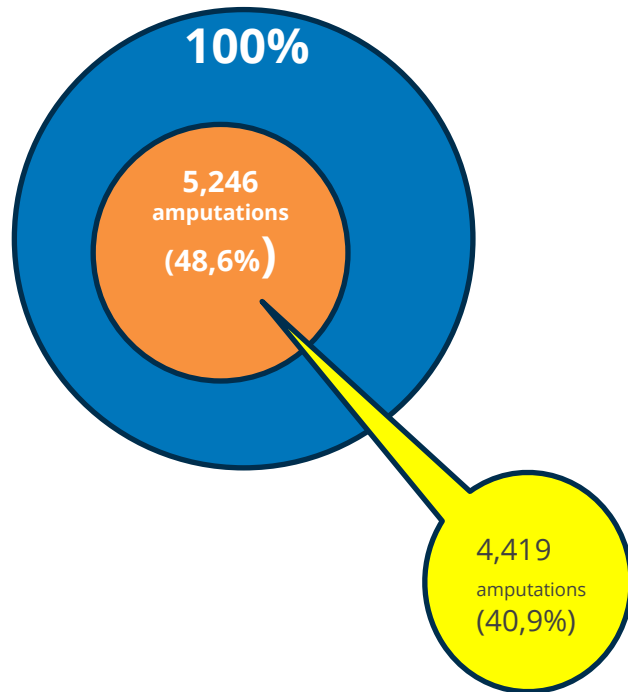
- Östergötlands region: AK/BK ratio of 2.10/1 (67.7% above-knee vs. 32.2% below-knee).
- Hallands region: AK/BK ratio of 0.54/1 (35.0% above-knee vs. 65.0% below-knee).

## List of regions included in the coverage analysis (regions with at least 40% coverage in the SwedeAmp register are specified and included in the further analysis on amputation levels)

Region	Subjects in IPR Database	Subjects in SwedeAmp Database	SwedeAmp Coverage (%)	Included in Analysis
Blekinge län	200	195	97.5	Yes
Dalarnas län	322	181	56.2	Yes
Gotlands län	97	81	83.5	Yes
Gävleborgs län	302	177	58.6	Yes
Hallands län	419	380	90.7	Yes
Jämtlands län	165	0	0.0	No
Jönköpings län	454	294	64.8	Yes
Kalmar län	242	47	19.4	No
Kronobergs län	171	68	39.8	Yes
Norrbottnens län	474	0	0.0	No
Skåne län	1,332	1,069	80.3	Yes
Stockholms län	1,992	798	40.1	Yes
Södermanlands län	325	64	19.7	No
Uppsala län	443	9	2.0	No
Värmlands län	271	16	5.9	No
Västerbottens län	275	0	0.0	No
Västernorrlands län	331	0	0.0	No
Västmanlands län	225	107	47.6	Yes
Västra Götalands län	1,947	1,135	58.3	Yes
Örebro län	349	231	66.2	Yes
Östergötlands län	452	394	87.2	Yes
<b>Sum</b>	<b>10,788</b>	<b>5,246</b>		<b>(5,110) *</b>

\* Data from SwedeAmp, covering ~40% of the IPR register across 13 Swedish regions, included 5,110 registered amputations for analysis.

## List of hospitals performing LLAs and represented in both IPR and SwedeAmp data (n=36)



Hospitals with a 60% coverage rate  
(N = 17)

Hospital	Patients in IPR	Patients in SwedeAmp	Coverage Rate (%)
Akademiska sjukhuset Uppsala	441	9	2,0
Blekingesjukhuset	200	195	97,5
Capio S:t Görans sjukhus	258	181	70,2
Centrallasarettet Växjö	143	68	47,6
Centralsjukhuset Karlstad	238	16	6,7
Centralsjukhuset Kristianstad	212	182	85,8
Danderyds sjukhus	405	253	62,5
Falu lasarett	234	181	77,4
Hallands sjukhus*	419	380	90,7
Helsingborgs lasarett	290	195	67,2
Hudiksvalls sjukhus	101	2	2,0
Hässleholms sjukhus	2	1	50,0
Höglandsjukhuset Eksjö	157	84	53,5
Karolinska Univ sjukhuset (Huddinge + Solna)	461	170	36,9
Kungälv's sjukhus	32	12	37,5
Lasarettet i Motala	78	37	47,4
Länssjukhuset Ryhov Jönköping	214	209	97,7
Länssjukhuset i Kalmar	157	34	21,7
Mälarsjukhuset i Eskilstuna	229	60	26,2
Norrtälje sjukhus	107	9	8,4
Nyköpings lasarett	93	4	4,3
Sahlgrenska Univ sjukhus (Göteborg + Mölndal)	704	525	74,6
Sjukhuset i Gävle	200	175	87,5
Skånes Univ.sjukhus (Malmö + Lund)	723	676	93,5
Södersjukhuset	669	141	21,1
Södertälje Sjukhus	91	44	48,4
Södra Älvsborgs sjukhus Borås	357	267	74,8
Uddevalla NÄL	411	331	80,5
Univ sjukhuset Linköping	192	186	96,9
Univ sjukhuset Örebro	339	231	68,1
Visby lasarett	97	81	83,5
Vrinnevisjukhuset i Norrköping	182	171	94,0
Vänamo sjukhus	83	1	1,2
Västerviks sjukhus	85	13	15,3
Västmanlands sjukhus Västerås	225	107	47,6
Ystad Lasarett	91	15	16,5
<b>Sum</b>	<b>8,920</b>	<b>5,246</b>	

\* Including two hospitals in the SwedeAmp register: Halmstad and Varberg.

## SwedeAmp amputations by level in all, 80%, 60%, and 40% hospital coverage rates

Amputation Level	Count in All	Ratio in All	Count in Hospitals	Ratio in Hospitals	Count in Hospitals	Ratio in Hospitals	Count in Hospitals	Ratio in Hospitals
	All Hospitals (N = 36)		≥80% (N = 10)		≥60% (N = 17)		≥40% (N = 24)	
TF	1,828	34.9%	932	36.0%	1,603	36.3%	1,699	35.7%
KD	438	8.4%	267	10.3%	373	8.4%	415	8.72%
TT	2,980	56.8%	1,387	53.6%	2,443	55.3%	2,646	55.6%
Total	5,246	100%	2,586	100%	4,419	100%	4,760	100%



# Influence of Surgical and Postoperative Factors on Time to Prosthetic Fit: A SwedeAmp Registry Study

Fridriksson Th., Scheving R., Lindgren Westlund K., Sigurjónsson B. Þ., Johannesson A.G.

- Second article, under review.....

